



Shoebox Television

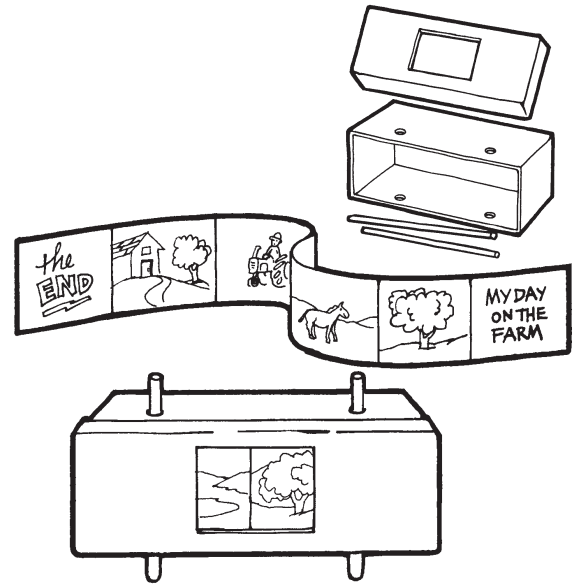


Materials

- shoebox
- two sturdy straws
- 4" x 2 $\frac{1}{2}$ " (10 cm x 6 cm) calculator tape
- craft knife (for adult use only)
- hole punch
- stapler
- crayons, fine-lined markers, or colored pencils

Directions

1. Place the shoebox and lid the lengthwise. Have an adult use the craft knife and cut a 4" x 2 $\frac{1}{2}$ " (10 cm x 6 cm) "screen" in the lid of the shoebox. With the hole punch, make two holes an inch (2.5 cm) past the screen and $\frac{1}{2}$ inch (1.3 cm) from the edge of the box in both the top and bottom of the lid. Make corresponding holes in the box. (It may be helpful to notch the box first with the craft knife and then use the hole punch.) The holes will be used to insert the straws.
2. Think about the story that you want to illustrate and describe. List the main incidents of the story on a sheet of paper.
3. On the role of calculator tape, write and illustrate your story. The first panel should be a title page and the last should say "The End." Write your story at either the top or the bottom of each panel.
4. When the story strip is finished, roll the edge of the title page around one straw while leaving equal parts of the straw on either side. Staple the roll to the straw. Do the same with the other end. Insert the straws into the holes you punched into the box.
5. Put on the lid and your television is done. Rotate the straws to move through the story.



Extension

- Present your television story to friends and family.